



Wikipedia Megaproject Update (August 2008)

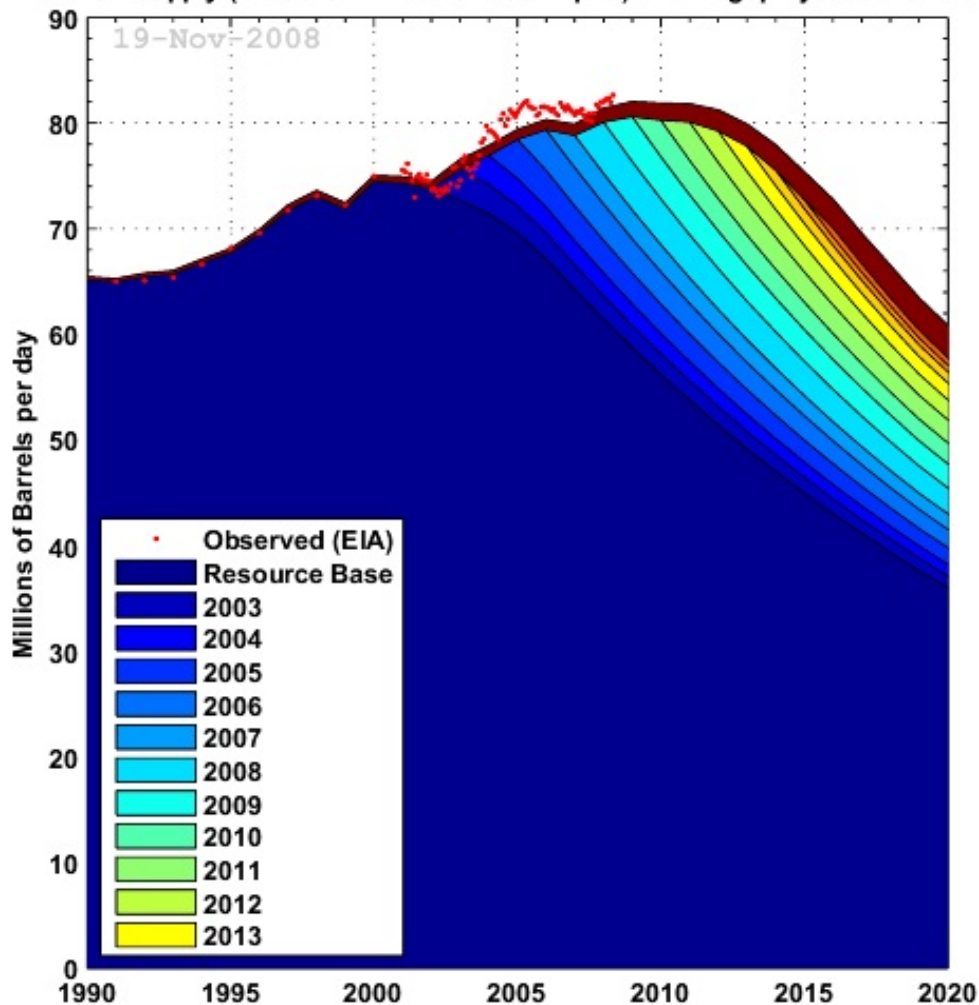
Posted by [Sam Foucher](#) on August 25, 2008 - 8:42am

Topic: [Supply/Production](#)

Tags: [megaprojects](#), [wikipedia](#) [[list all tags](#)]

This is an update on the [Wikipedia Oil Megaproject Database](#) maintained by the [Oil Megaprojects task force](#) (Ace, Stuart Staniford, myself and many others). The database contains now more than 440 separate entries and is growing everyday. The derived net new capacity (i.e. once depletion from existing production is included) is around 1.5 mbpd for 2008 and 2009 after which depletion may dominate.

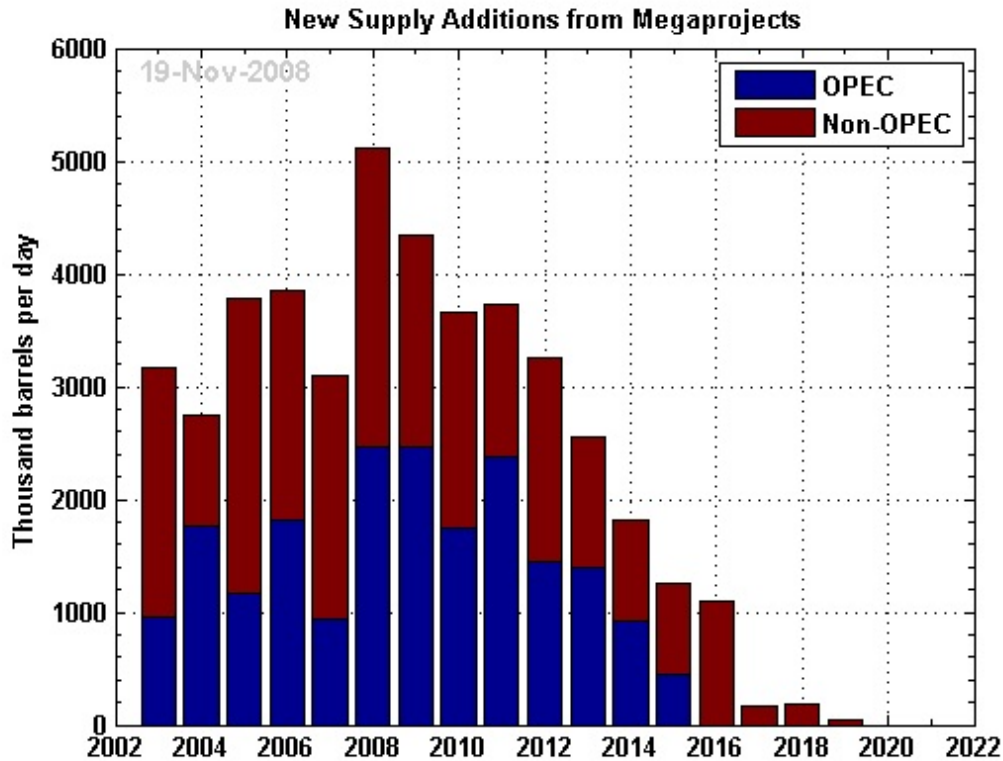
World Oil Supply (Crude Oil + Natural Gas Liquid) and Megaproject Contributions



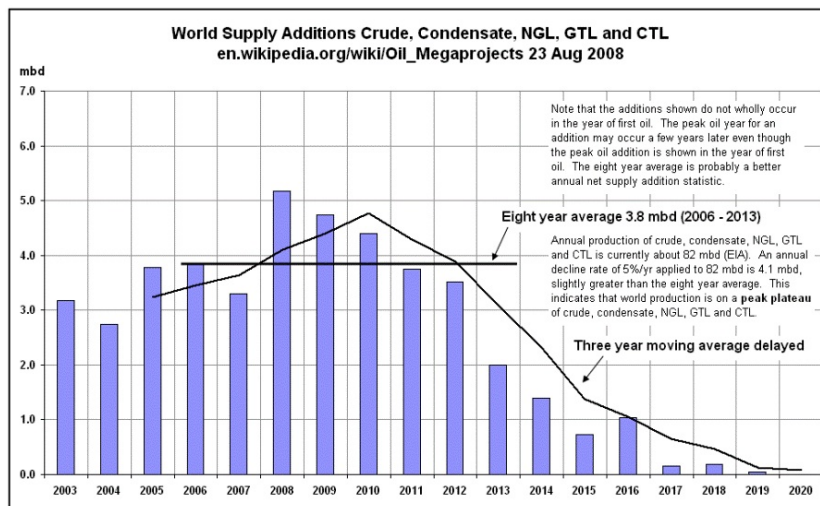
Possible future supply capacity scenario for crude oil and NGL based on the Wikipedia Oil Megaproject database. The resource base post-2002 decline rate is a linearly increasing rate from 0% to 4.5% between

2003 and 2008 then constant at 4.5% afterward. The decline rate for each annual addition is 4.5% after first year. The observed data points are the monthly crude oil + NGL estimates from the EIA.

Here is the last compilation of new supply peak contributions stacked according to their projected first oil year:

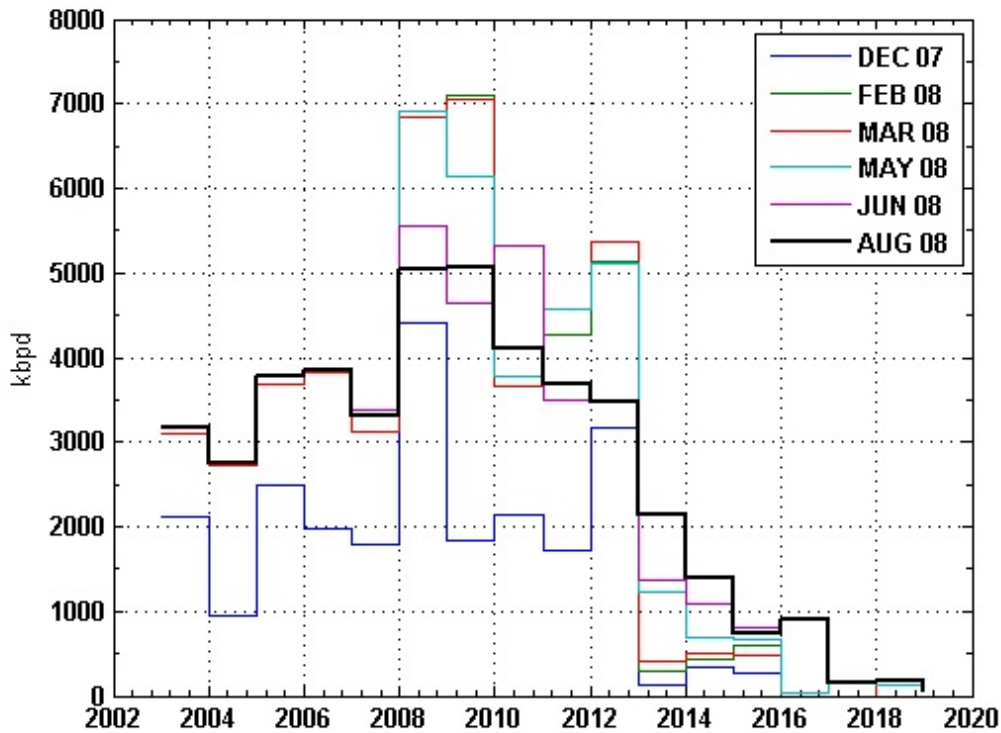


update: Ace has also produced this chart yesterday (Click to enlarge):

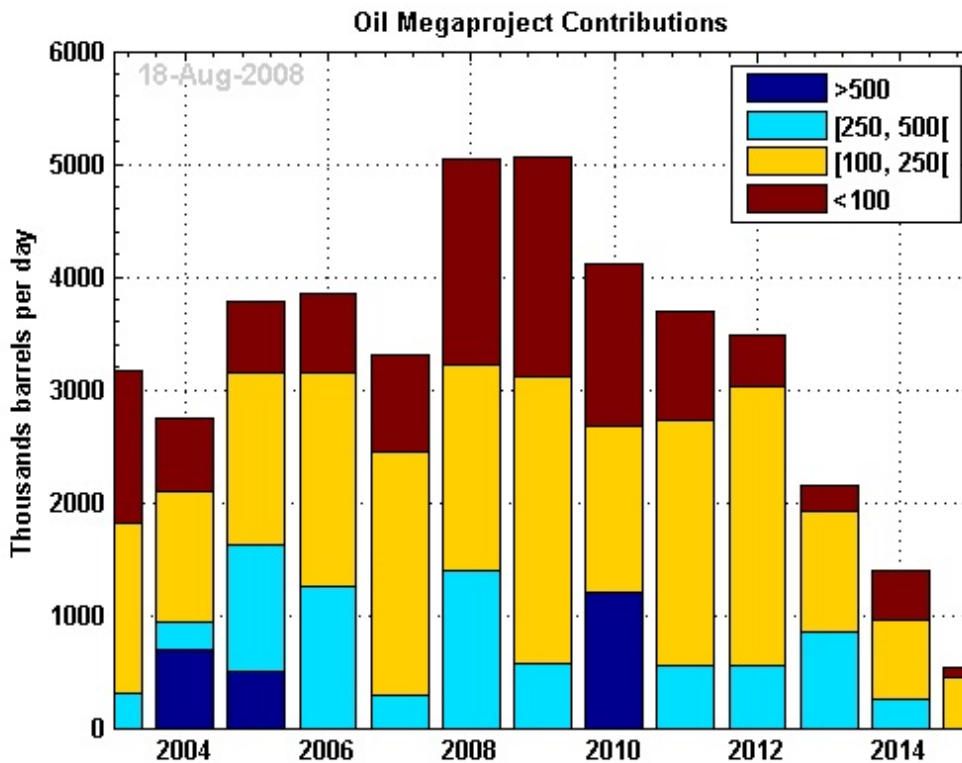


Below is the evolution of this chart since the database creation. Since last month, the 2008 and

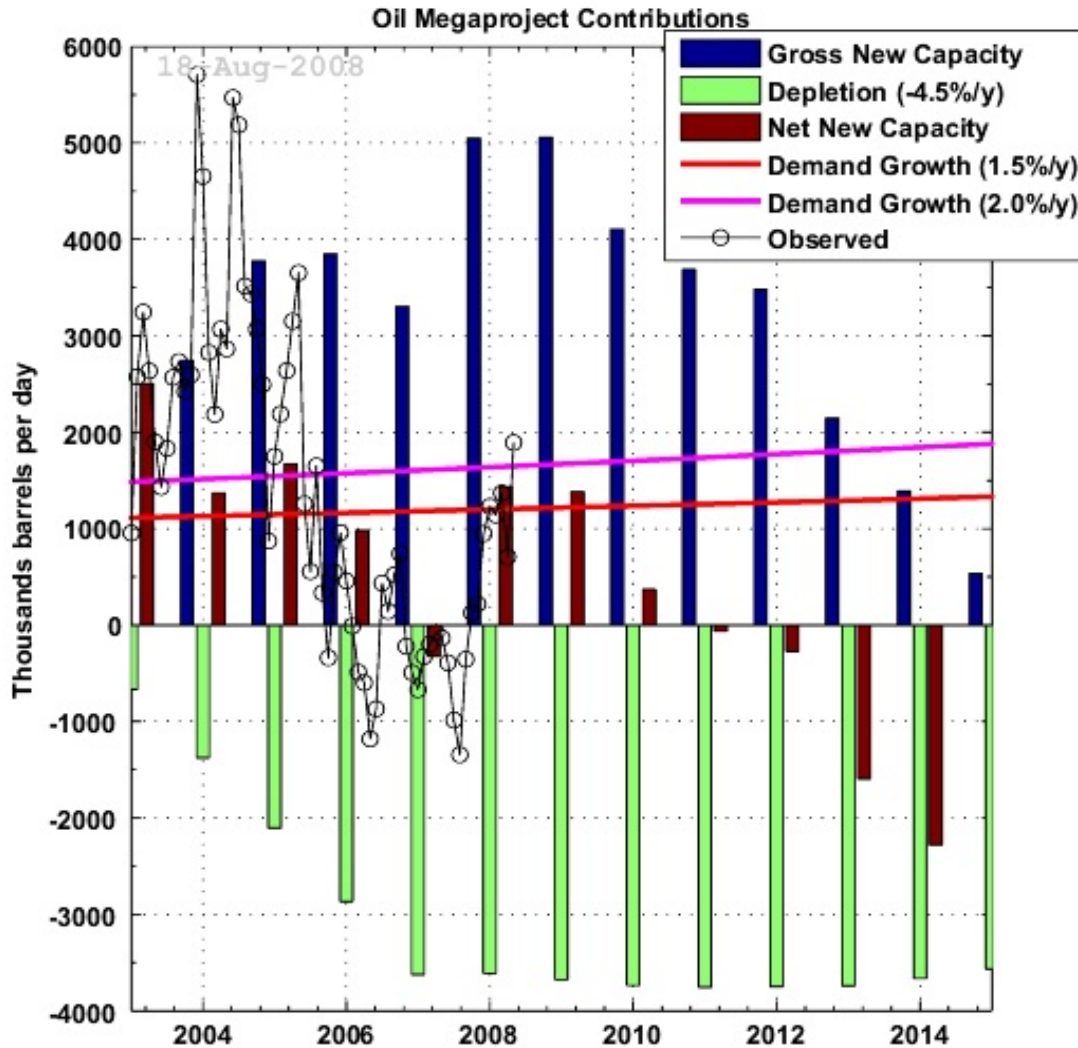
2010 levels went down and 2013-2014 went up.



The 2008-2009 maximum seems to come from a larger addition of "small" projects (<100 kbpd):



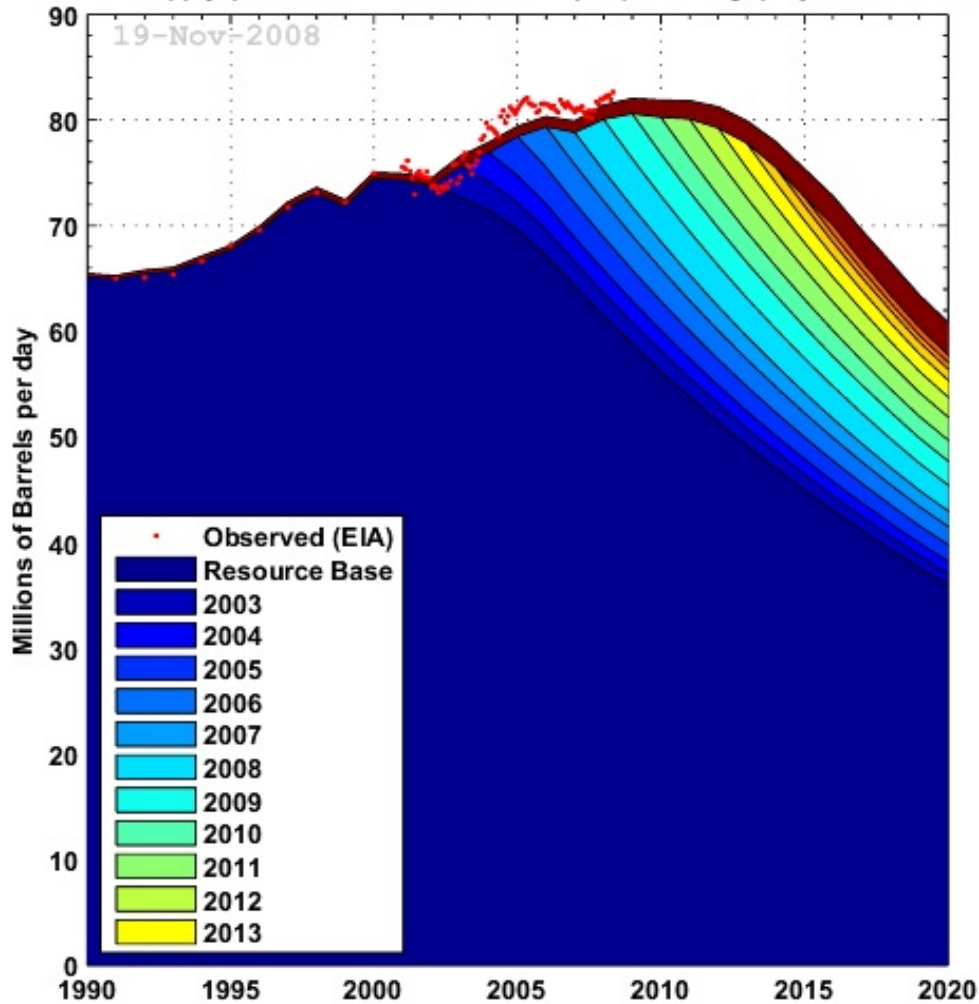
Below is an hypothetical scenario for future supply growth based on the Megaproject database and a 4.5% decline rate for the resource base. The last monthly numbers from the EIA seem to confirm an increase in supply of about 2 mbpd compared to the same month last year. The years 2008 and 2009 should see reasonable supply growth after 2 years of negative growth then a decline is foreshen at the moment starting in 2010-2011.



Possible new gross and net new supply additions compiled by year of first oil. The observed data is the year-on-year change in Crude oil + NGL monthly production from the EIA. The resource base post-2002 decline is a linearly increasing rate from 0% to 4.5% between 2003 and 2008 then constant at 4.5% afterward. The decline rate for each annual addition is 4.5% after first year. Demand growth is calculated using 2002 as a baseline.

Below is the corresponding supply profile for crude oil + NGL where a broad production peak is seen around 2010.

World Oil Supply (Crude Oil + Natural Gas Liquid) and Megaproject Contributions



Possible future supply capacity scenario for crude oil and NGL based on the Wikipedia Oil Megaproject database. The resource base post-2002 decline rate is a linearly increasing rate from 0% to 4.5% between 2003 and 2008 then constant at 4.5% afterward. The decline rate for each annual addition is 4.5% after first year. The observed data points are the monthly crude oil + NGL estimates from the EIA.

Many thanks to [Ace](#) and countless others who have diligently updated the data.

Finally, maintaining this database is a lot of work and it is crucial to track delays, project final approval, etc., so I'd like to repeat our [appeal](#): the more folks in the TOD community head over to the Wikipage and help, the faster we'll know what's really going on here.

Related stories:

[Oil Megaproject Update \(July 2008\)](#)
[Update on Megaproject Megaproject](#)

[Help us List Megaprojects](#)



This work is licensed under a [Creative Commons Attribution-Share Alike 3.0 United States License](#).