



Hurricane Dean's Impact on Oil Infrastructure

Posted by [Sam Foucher](#) on August 20, 2007 - 9:30am

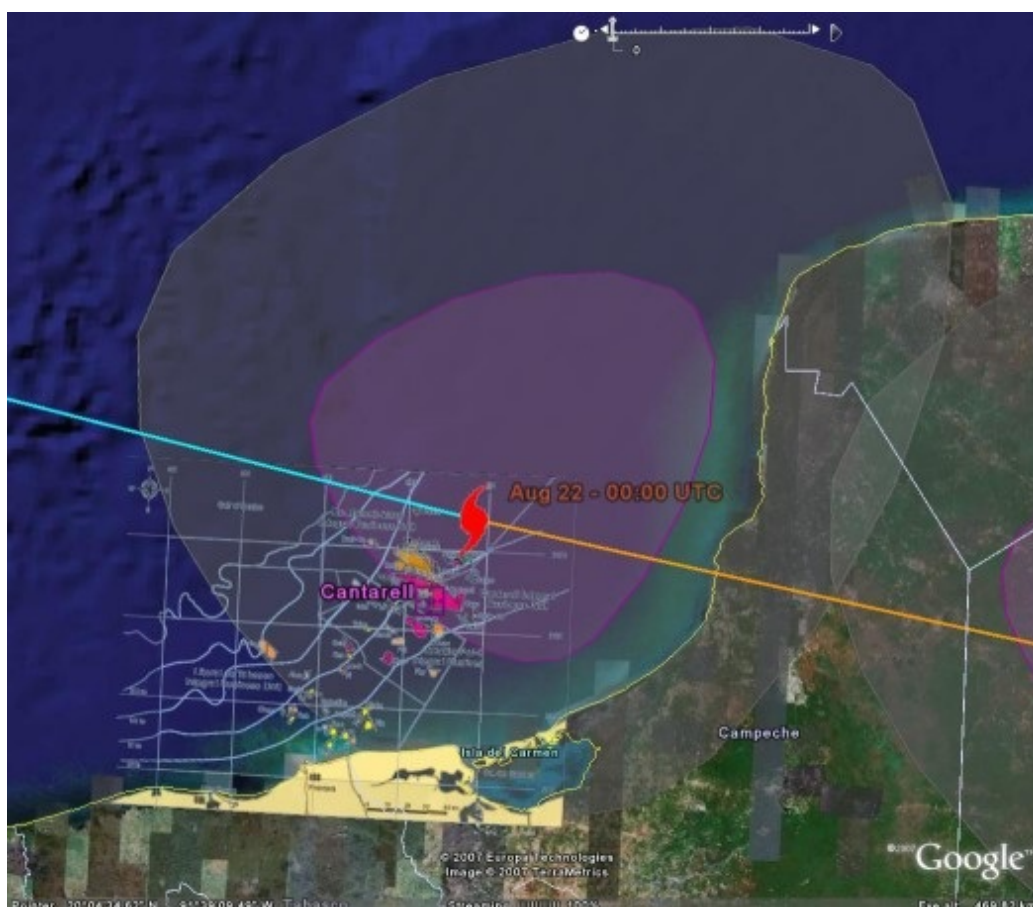
Topic: [Supply/Production](#)

Tags: [cantarell](#), [gulf of mexico](#), [hurricane dean](#), [hurricanes](#), [kmz](#), [mexico](#) [[list all tags](#)]

UPDATE: NEW UPDATED POST ON TOP OF FRONT PAGE AS OF 1:20am EDT, 8/21

This post is a collection of different [Google Earth](#) based mashups of various weather data, oil infrastructure overlays and excellent impact maps established by [Chuck Watson](#) (see also PG's [post](#) for a list of resources on Mexico oil infrastructure). The list of Google Earth files (kml/kmz files) used in this post can be find on my [blog](#). There is now a good likelihood that Dean will impact significantly the [Cantarell](#) and the [KMZ](#) oil complex which constitute the backbone of the Mexican production.

I will try to update this post during the day as soon as new forecasts are available.



Cantarell and KMZ oil complex, forecast track and wind strength distribution (the purple area is at least tropical storm winds) from yesterday night run (21:00 UTC). [Click to Enlarge.](#)



Forecast track possibility along with "spaghetti models" from yesterday night run (21:00 UTC). The blue squares along the US coast are the major oil platforms. Click to Enlarge.



Hurricane Dean Impact forecast established by [Chuck Watson](#) where Red is moderate damage and purple is severe damage. Click to Enlarge.

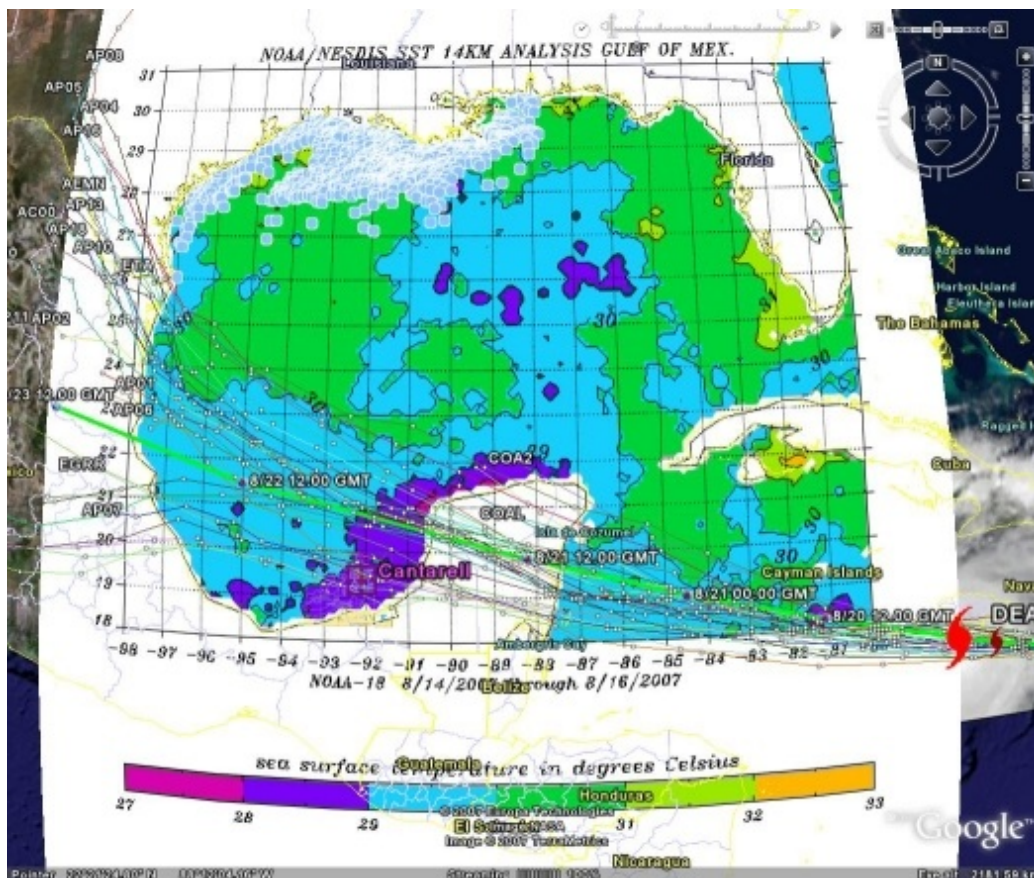


Hurricane Dean surge forecast established by [Chuck Watson](#) where red is a storm surge > 6 m.

[Click to Enlarge.](#)



[Wind strength distribution.](#)
[Click to Enlarge.](#)



Model tracks surimposed on SST values, Note that SST values are relatively cooler (28-29 deg. C) around the Cantarell complex. Click to Enlarge.



This work is licensed under a [Creative Commons Attribution-Share Alike 3.0 United States License](http://creativecommons.org/licenses/by-sa/3.0/).